



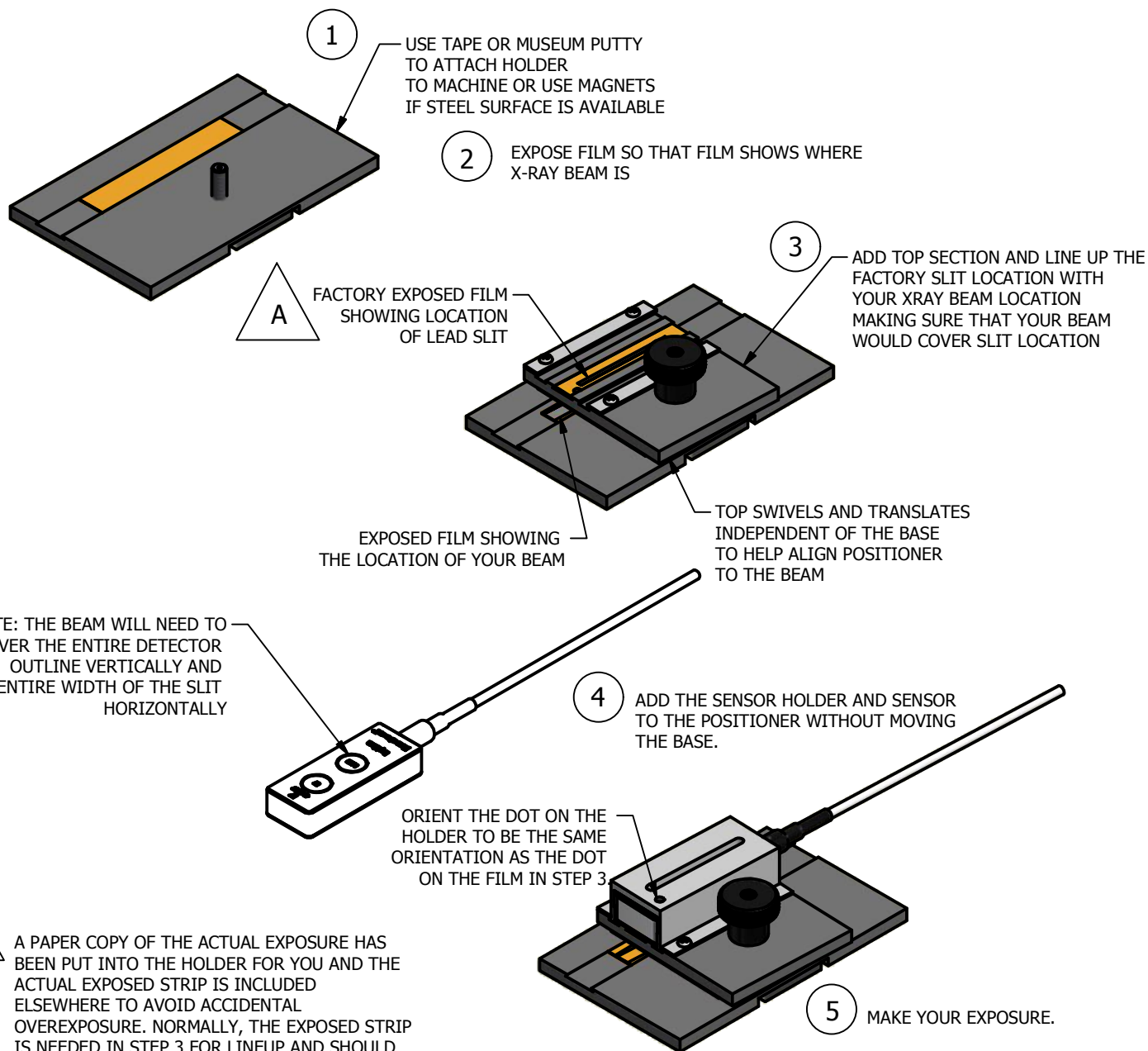
Model 8462C Multi-Sensor Pan-Dental Positioner

The Model 8462C Multi-Sensor Pan-Dental Positioner has been designed to facilitate attaching and reliably positioning a Rapidose, Accu-Gold, or Rapid-Gold Multi-Sensor on many types of panoramic dental systems. It is intended to be used for reproducibility measurements of the machine.

The sensor is installed in the positioner and is attached to the moving x-ray head while the digitizer module is stationary. Since the collimation on panoramic machines only partially exposes the detector, a lead slit is used in order to reliably produce repeatable measurements. As a result of this, the actual Dose and kV readings displayed by the software will be some fraction of the actual machine setting. However, the dose readings will be consistent from exposure to exposure and the timing information will be correct.

The positioner is designed to use Gafchromic (XRQA2) self-developing x-ray film to determine the location of the x-ray beam. A number of film strips have been included to get you started and additional strips can be obtained from Radcal or a Gafchromic film distributor (www.gafchromic.com).

Radcal would appreciate any feedback on the usage of this positioner and any suggestions for improvement.



MULTISENSOR PAN-DENTAL POSITIONER MODEL 8462C